

# EMPORIA

## - Lost in the City -

Please respect the work behind this game and do NOT rip ANYTHING from it.

### - ANTIVIRUS WARNING -

Because of an unofficial patch (TREP) applied during level building, antivirus software and Windows Defender will detect tomb4.exe as virus, or even worse, will delete it without even advising.

But I can grant you all the detections about that are false positives!

To bypass this issue, add the tomb4.exe process to the exception list of Windows Defender and your other antivirus software.

For more detailed information, check the following thread on trle.net:

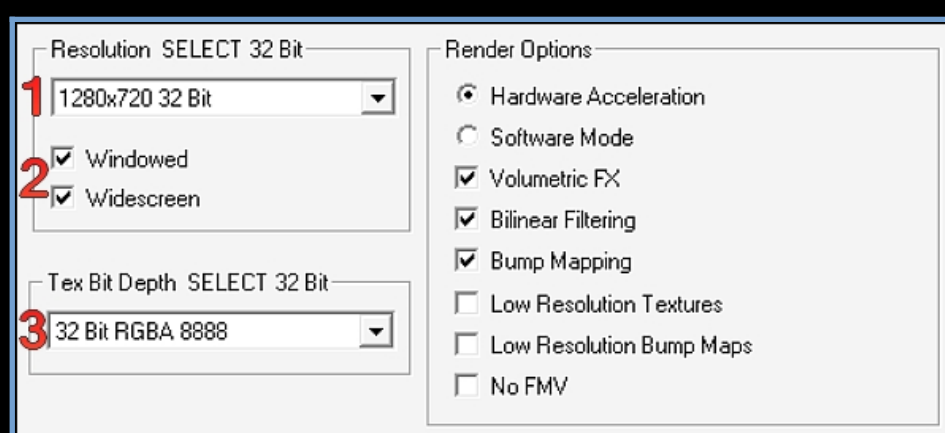
<http://forum.trle.net/viewtopic.php?f=78&t=33085>

### - THE CORRECT GAME SETUP -

Start Launch.exe and press Ctrl to call the game setup.

1. Choose your resolution (make sure it says 32 Bit)
2. However you prefer to play, activate Windowed and/or Widescreen.
3. Select 32 Bit RGBA 8888

The options on the right side can be enables as you like.



### - LEVEL INFO -

Story:

*Lara is in the process of examining some old ruins when suddenly a green light appears. As if hypnotized, she approaches this anomaly. An adventure of a completely different kind begins...*

Number of secrets: 3

New moves and features are all explained ingame.

### - LINKS -

[TRLE.net](#) (profile with all my levels)

[Facebook](#) (exclusive sneak peaks to upcoming levels)

[Twitch](#) (building and playing streams)

[Discord](#) (behind the scenes, previews, downloads)

[TRSearch](#) (my released objects and textures)

### - CREDITS -

(alphabetical order)

Testers: **Die Basis, Dinneraider, Zuxuna**

Lara's Voice: **AgentXP**

Lara's Animations:

- **bashar** (Stylish walk)
- **FreakRaider** (TRA Climb up)
- **Geckokid** (Faster shimmey + Stumble)
- **Joey Quint** (UW roll + TRL/TRA jump + Faster ledge corner)
- **Tomo** (Ledge jumps + Swingpole moves)

Objects:

**Axelia** (Hair), **Baddy** (Dog), **Dark Death** (Gold Items), **Dino** (Flowers), **Horus** (Switch), **karlo002** (Electric box), **LGG-PRODUCTION** (Drill + Shelf + Button), **maax87** (Flares + Lamp), **mike quahe** (Book), **Piega** (Chandelier + Medipacks + Lion head), **Po Yu** (Outfit), **Sponge** (Lockpick + Load/Save + Birds), **Teme9** (Butterflies + Plant leaves + Tree), **TheTiger** (Horizon), **Trangel** (Uzis + Shotgun), **Uzi Master** (Grates)

Textures:

**Haley** (Various texture sets), **Horus** (Versailles textures), **SW Battlefront + JK Series**

Several Stuff from:

**BtB Greece Package**  
**BtB Northern Legends Package**  
**BtB Space Package**  
**BtB Steampunk Package**  
**BtB Venice Package**

Thanks to everyone involved in creating these packages.

Music:

**Harry Potter Games, Oblivion, Tomb Raider 3, Witcher 3**

Sounds:

**Fallout 3** (Inthegrave), **Oblivion** (Pingus!), **SW Jedi Knight Series**, **SW KOTOR** (ARAJediMaster, iteachvader), **Tomb Raider Series**

Tools used:

**FEED** (T4Larson), **FontEdit** (Michiel), **Leikkuri** (Pyuaumch), **Meta2TR** (meta2tr), **NGLE** (Paolone), **StrPix** (Turbo Pascal and Sapper), **SWD Edit** (champ), **TBuilder** (IceBerg), **TREP** (Pyuaumch + additions by ChocolateFan, Harly Wuson, Nowid50, Tomo, T4Larson), **TRNormals** (Sapper), **TRW Animation Utilities** (Krystian), **WADMerger** (Michiel and Paolone)

Also a big thank you to the whole TRLE community, all the people who were helping and supporting me, without you this level wouldn't be half as good.

Sorry, if I forgot anyone to mention.

### - DISCLAIMER -

This level was not made and is not supported by Core Design Ltd, EIDOS Interactive and Square Enix. This level must not be modified, sold, rented, leased or commercially exploited in any way.